

# Located in the center of Japan, Japan's largest industrial cluster

Aichi is the number one manufacturing region in Japan. While it is home to many advanced industries such as automotive sector manufacturer, beautiful traditional crafts such as Owari cloisonné and Arimatsu Narumi Shibori tie-dyeing have been passed down to generations even today. Innovative technology and traditional culture coexist in Aichi. In addition, the region is blessed with a mild climate and abundant water resources throughout the year, leading to a thriving agriculture industry. Located in the center of Japan, Aichi offers land, sea, and air transportation networks and the infrastructure required to support industry. The substantial range of available facilities also enhance the appeal of the area.

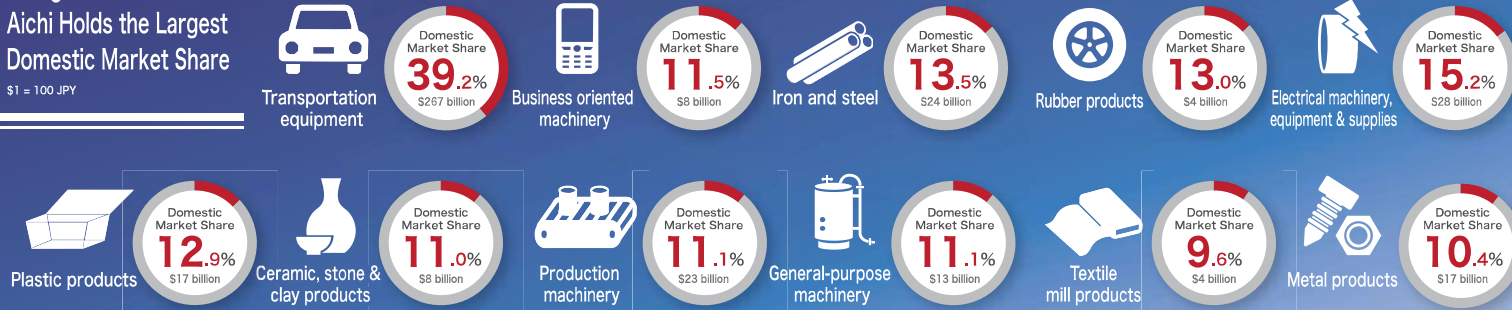


**Product exports** 43 consecutive years **No.1**  
Manufactured goods shipments value \$479 billion

**Exports No.1**  
No.1 exports in Japan \$161 billion / Trade surplus \$90 billion

## Categories in which Aichi Holds the Largest Domestic Market Share

\$1 = 100 JPY



Amidst on going globalization and digitalization, the Aichi Prefectural Government is working to reinforce its industrial strength with an aim to create Japan's No.1 center for innovation and creation. To achieve this goal, Aichi welcomes university and postgraduate students, and researchers from Japan and abroad.

We have created this pamphlet that summarizes the characteristics of the prefecture's industries, universities, research institutes, and international student support measures, so that potential students and researchers can understand the appeal of Aichi. We will continue to promote the exchange of students and researchers from overseas universities and support startup companies to attract highly skilled human resources, develop our human resources, and revitalize our industries, to become an "international innovation city".

Hideaki Ohmura, Governor of Aichi Prefecture