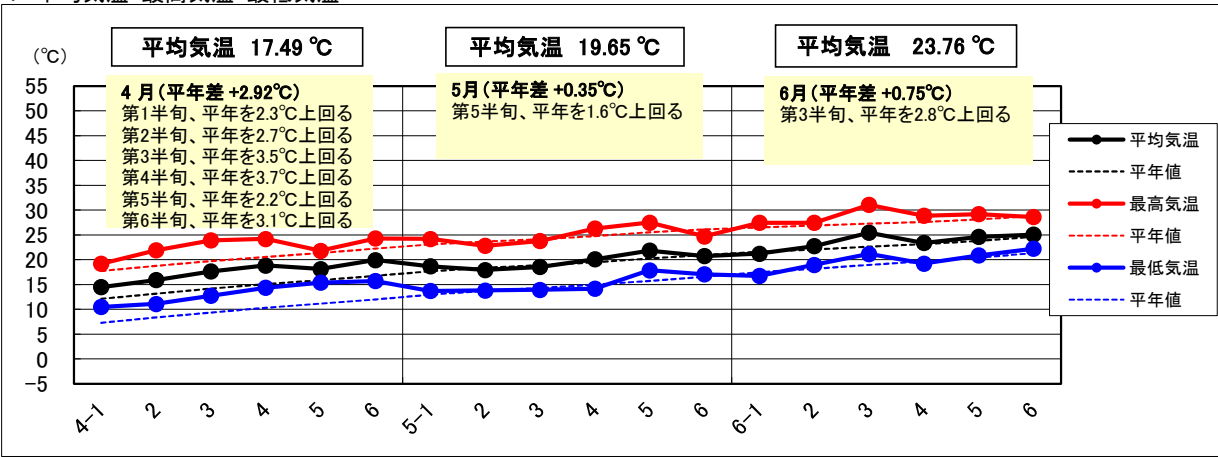
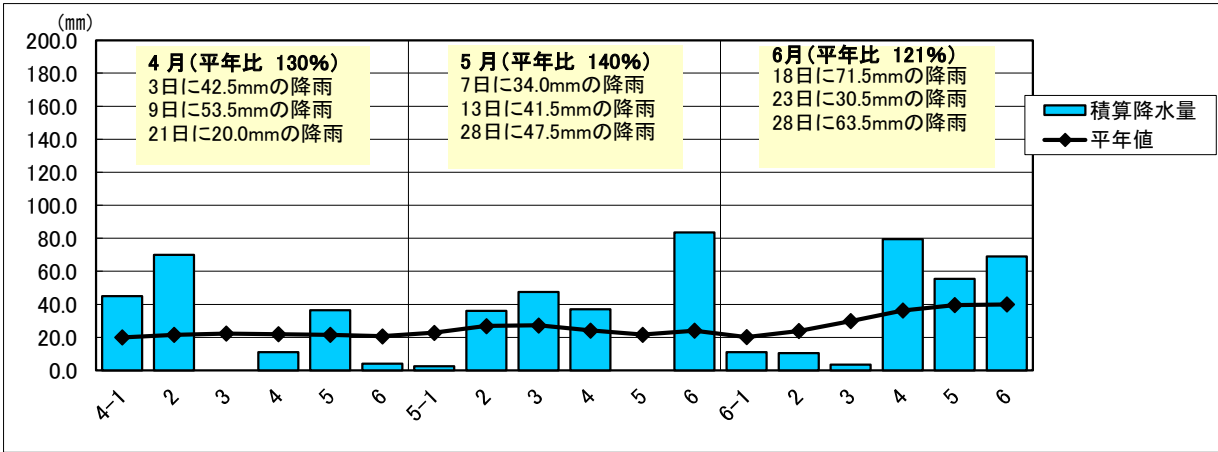


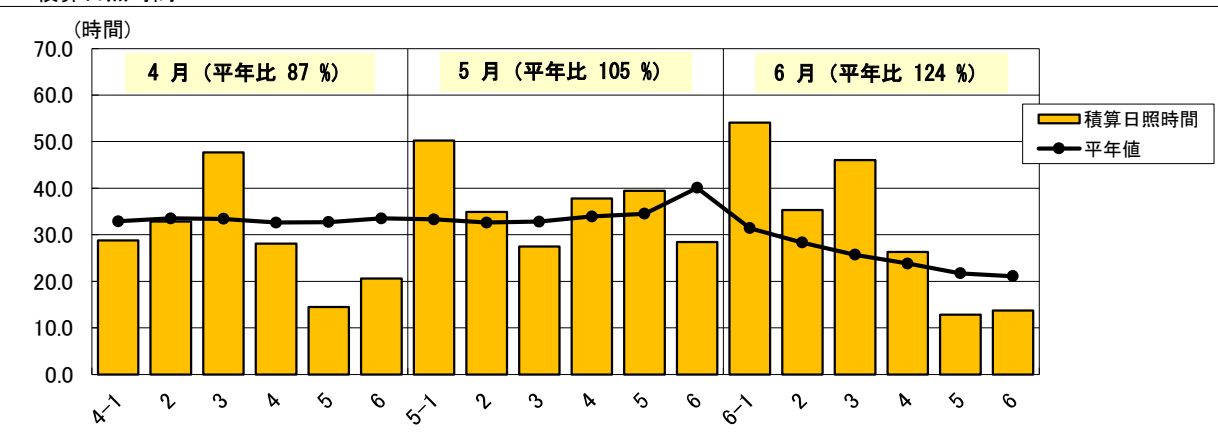
1 平均気温・最高気温・最低気温



2 積算降水量



3 積算日照時間



日付	平均気温	平年値	(平年差)	最高気温	平年値	(平年差)	最低気温	平年値	(平年差)	積算降水量	平年値	(平年比)	積算日照時間	平年値	(平年比)
4-1	14.5	12.2	2.3	19.2	17.8	1.5	10.5	7.3	3.2	45.0	20.1	224%	28.8	32.9	88%
2	15.9	13.2	2.7	21.9	18.8	3.1	11.1	8.4	2.7	70.0	21.6	324%	32.8	33.5	98%
3	17.7	14.2	3.5	23.9	19.8	4.1	12.8	9.4	3.4	0.0	22.3	0%	47.7	33.4	143%
4	18.8	15.1	3.7	24.2	20.6	3.6	14.4	10.4	4.0	11.0	22.0	50%	28.1	32.6	86%
5	18.1	15.9	2.2	21.8	21.4	0.4	15.4	11.2	4.2	36.5	21.6	169%	14.5	32.7	44%
6	19.9	16.8	3.1	24.3	22.3	2.0	15.7	12.0	3.7	4.0	20.7	19%	20.6	33.5	61%
5-1	18.7	17.7	1.0	24.2	23.1	1.1	13.7	13.0	0.7	2.5	22.8	11%	50.2	33.3	151%
2	17.9	18.4	-0.4	22.8	23.7	-0.9	13.8	13.8	0.0	36.0	26.9	134%	34.9	32.6	107%
3	18.6	18.9	-0.3	23.8	24.1	-0.3	13.9	14.3	-0.4	47.5	27.3	174%	27.5	32.8	84%
4	20.1	19.5	0.6	26.3	24.8	1.5	14.2	15.0	-0.8	37.0	24.2	153%	37.8	33.9	112%
5	21.8	20.3	1.6	27.5	25.6	1.9	17.9	15.8	2.1	0.0	21.7	0%	39.4	34.5	114%
6	20.8	21.0	-0.2	24.7	26.1	-1.4	17.1	16.6	0.5	83.5	24.1	346%	28.4	40.1	71%
6-1	21.2	21.6	-0.4	27.4	26.6	0.9	16.8	17.5	-0.7	11.0	20.2	54%	54.1	31.4	172%
2	22.7	22.1	0.6	27.5	26.9	0.5	19.0	18.2	0.7	10.5	23.9	44%	35.3	28.3	125%
3	25.5	22.7	2.8	31.1	27.3	3.8	21.2	19.0	2.2	3.5	29.9	12%	46.0	25.7	179%
4	23.4	23.2	0.2	28.9	27.6	1.2	19.2	19.7	-0.5	79.5	36.3	219%	26.3	23.8	111%
5	24.6	23.8	0.8	29.2	28.1	1.0	20.9	20.5	0.4	55.5	39.6	140%	12.8	21.7	59%
6	25.1	24.7	0.4	28.6	28.9	-0.2	22.3	21.4	0.9	69.0	40.0	173%	13.7	21.1	65%