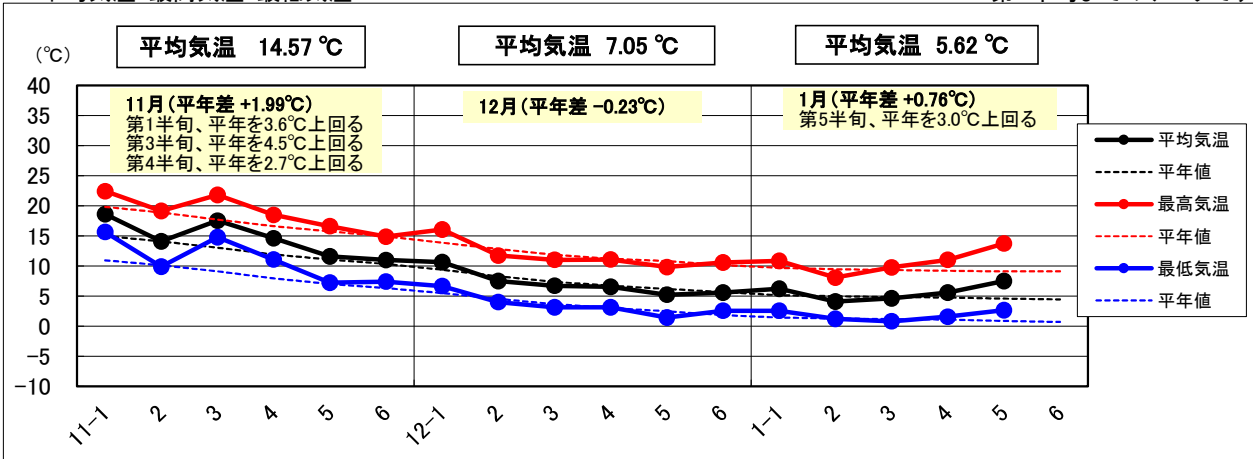
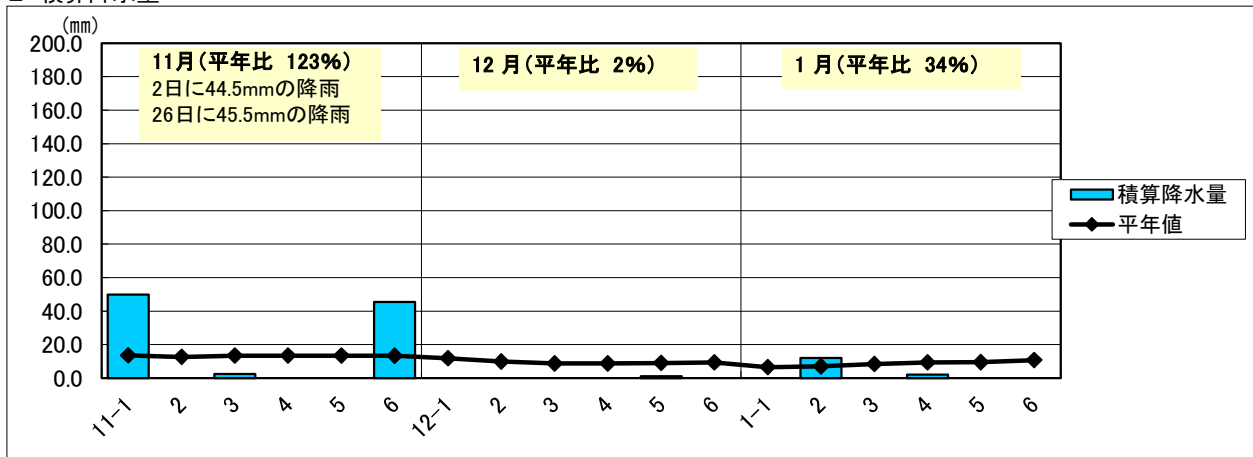


1 平均気温・最高気温・最低気温

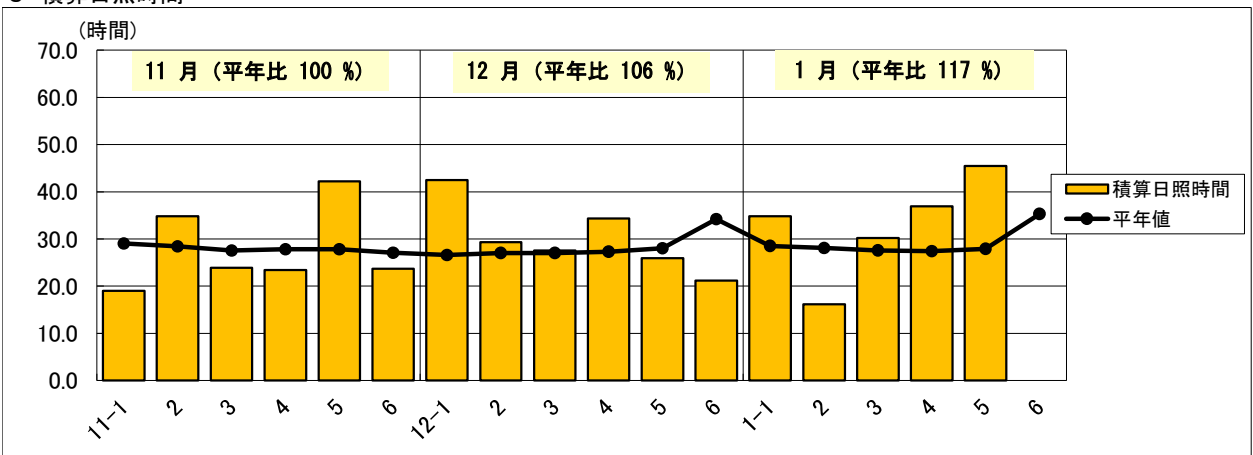
第5半旬までのデータです



2 積算降水量



3 積算日照時間



日付	平均気温	平年値	(平年差)	最高気温	平年値	(平年差)	最低気温	平年値	(平年差)	積算降水量	平年値	(平年比)	積算日照時間	平年値	(平年比)
11-1	18.6	15.0	3.6	22.4	19.8	2.6	15.6	10.9	4.7	50.0	13.6	368%	19.0	29.0	66%
2	14.1	14.1	0.0	19.2	18.9	0.3	9.9	10.1	-0.2	0.0	12.7	0%	34.8	28.4	123%
3	17.5	13.1	4.5	21.8	17.7	4.1	14.8	9.1	5.7	2.5	13.4	19%	23.9	27.5	87%
4	14.6	11.9	2.7	18.5	16.6	1.9	11.1	7.9	3.1	0.0	13.5	0%	23.4	27.8	84%
5	11.6	11.1	0.5	16.6	15.8	0.9	7.2	7.0	0.2	0.0	13.5	0%	42.2	27.8	152%
6	11.0	10.3	0.7	14.9	14.9	0.0	7.4	6.3	1.1	45.5	13.3	342%	23.7	27.1	87%
12-1	10.7	9.4	1.3	16.0	13.9	2.2	6.7	5.5	1.2	0.0	11.8	0%	42.5	26.6	160%
2	7.5	8.3	-0.8	11.7	12.8	-1.1	4.0	4.5	-0.5	0.0	9.8	0%	29.3	27.0	109%
3	6.7	7.4	-0.7	11.0	11.9	-0.9	3.1	3.7	-0.5	0.0	8.7	0%	27.6	27.0	102%
4	6.6	6.7	-0.2	11.1	11.2	-0.1	3.2	3.0	0.1	0.0	8.7	0%	34.3	27.3	126%
5	5.2	6.2	-1.0	9.8	10.8	-1.0	1.4	2.5	-1.1	1.0	9.0	11%	25.9	28.0	93%
6	5.6	5.7	0.0	10.6	10.2	0.4	2.6	1.9	0.7	0.0	9.4	0%	21.2	34.2	62%
1-1	6.2	5.2	1.1	10.8	9.7	1.1	2.6	1.4	1.1	0.0	6.5	0%	34.8	28.5	122%
2	4.1	5.0	-0.8	8.1	9.5	-1.4	1.2	1.3	0.0	12.0	7.0	171%	16.2	28.1	58%
3	4.6	4.9	-0.2	9.8	9.3	0.4	0.8	1.2	-0.4	0.0	8.4	0%	30.2	27.6	109%
4	5.6	4.7	0.9	11.0	9.2	1.8	1.6	1.1	0.5	2.0	9.4	21%	36.9	27.4	135%
5	7.5	4.6	3.0	13.7	9.1	4.6	2.7	0.9	1.8	0.0	9.5	0%	45.4	27.9	163%
6		4.5			9.1			0.7			10.8			35.3	